

What To Do If You Suspect A Grow-Op

WHAT TO LOOK FOR:

- Residents only attend the home occasionally for short periods of time
- Equipment such as large fans, lights, plastic plant containers and soil are carried into the house at odd hours
- Entry is often made into the home using only the garage door to conceal activities
- Garbage containing used soil and plant material is discarded in surrounding areas
- Windows are covered to prevent light from entering the home and to conceal activity
- Bright light can be seen escaping from windows and windows are often covered in condensation
- Hydro meters are tampered with
- Sounds of construction and ventilation fans can sometimes be heard
- The growing marijuana produces a strong skunk-like odour that can be detected outside the home

GROW OPS ALSO POSE A THREAT TO PUBLIC SAFETY DUE TO:

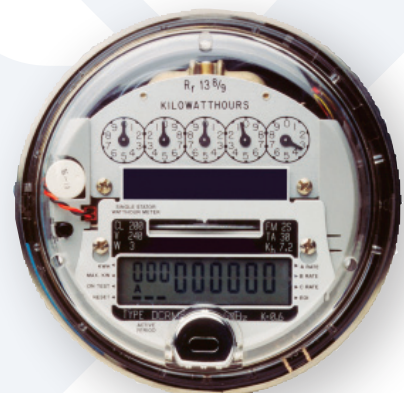
- Fire hazards - exposed live wires and high-intensity light bulbs. The extra exhaust fans used in grow ops can cause a house to go up in flames very quickly endangering surrounding homes.
- Structural damage to homes - Homes may be altered for the purposes of growing marijuana; structural walls may be removed with the possible consequence of the house collapsing. High levels of humidity lead to condensation buildup causing the growth of unhealthy mold and fungus.
- Electrocutations - Electrical system rewiring by the operators poses a severe threat to those working on it, as well as to residents and emergency responders.
- Environmental damage - hazardous chemicals like fungicides and pesticides are disposed of down the household drains into our water systems.
- Power outages - Overloading the electrical system can cause transformers to blow resulting in power outages in entire neighborhoods and costly replacements.
- Higher Costs to Utilities - Because indoor grow ops require massive amounts of electricity which can lead to detection, growers usually steal the power.



Theft from public utilities in the \$100's of millions nationally



Grow Ops introduce crime and unsafe conditions to your neighborhood



© Paladin Security, 2010